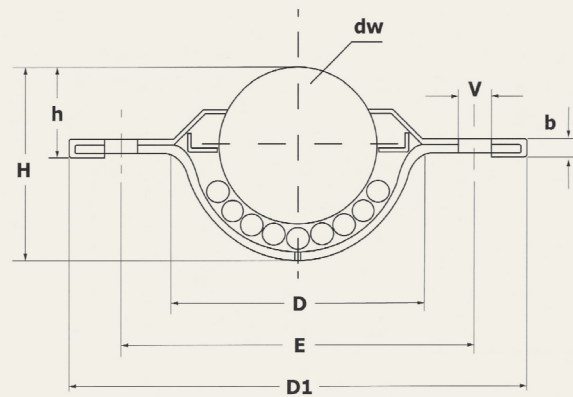


FOR LOADS UP TO 120KG

### BALL TRANSFER UNITS SPS B "DV"

WITH TWO HOLES FOR SCREW FIXING. ZINC PLATED BODY AND STEEL BALLS  
 WITHOUT FELT SEALING SYSTEM AND SELF CLEANING HOLE  
 WORKING TEMPERATURE: -20°C - +150° C



TYPE	Features	Dw	D	D1	h	H	b	V	E	Holes	Kg Loading Capacity	Kg Weight
SPS 15 B DV	ZINC PLATED BODY AND STEEL BALLS	15	24 -0,2	41	10,8±0,2	19,3	3,4	3,5	30	2	15	0,045
SPS 25 B DV	ZINC PLATED BODY AND STEEL BALLS	25	38 -0,3	56	14,6±0,3	30	4	4	45	2	60	0,13

\*All measurements in mm.

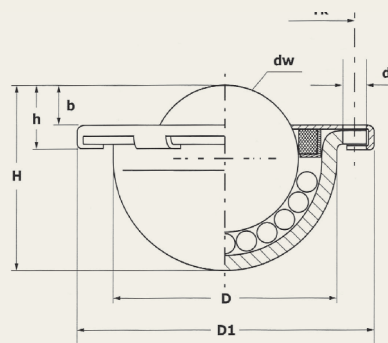
\*As special order could be supplied with delrin or stainless steel ball combined with small balls in steel or stainless steel.

Only Load Up



### BALL TRANSFER UNITS SPS B "SC"

WITH THREE HOLES FOR SCREW FIXING ZINC PLATED BODY AND STEEL BALLS  
 WITHOUT FELT SEALING SYSTEM AND SELF CLEANING HOLE  
 WORKING TEMPERATURE: -20°C - +100° C



TYPE	Features	Dw	D	D1	h	H	b	d	Tk	Holes	Kg Loading Capacity	Kg Weight	
SPS 22 B SC	ZINC PLATED BODY AND STEEL BALLS	22	33 -0,2	45	9,8 ± 0,2	27,7	6,2	3,5	39	3	120	80	0,1

\*All measurements in mm.

\*As special order could be supplied with delrin or stainless steel ball combined with small balls in steel or stainless steel.

Load Up Load Down

